

Migrating from traditional TDM voice to IP services with Unlimited Network Visibility



State of Maryland is Achieving Efficiency, Security, and Compliance with Network Critical's Visibility Solution

Summary

The state of Maryland's Department of Information Technology faced challenges transitioning from traditional voice services to IP-based ones, including network complexity, performance issues, and security concerns. Network Critical's Visibility Solution provided comprehensive traffic analysis and monitoring across all network layers. This ensured proactive issue identification and resolution, maintaining high service availability and security. The SmartNA-XL™ deployment with multiple interfaces streamlined operations and allowed for testing new services. Moreover, it facilitated compliance with regulatory requirements by monitoring and auditing network traffic, enhancing overall network efficiency and reliability.

The Challenge

The Department of Information Technology for the state of Maryland has been transitioning users and organizations from traditional TDM voice services to IP-based services for a few years now. As adoption rates increased, various issues arose. For example, IP networks are complex and can support a wide range of data types, which can cause performance issues such as congestion and packet loss. Additionally, there are security concerns like malware and DDoS attacks that must be quickly identified and addressed through real-time monitoring. In order to efficiently allocate resources in large government networks, effective monitoring is necessary to optimize resource usage and control costs. Therefore, taking a proactive approach to identifying and resolving issues has become crucial in order to maintain high service availability and avoid downtime.

Network Critical Solution

Network Critical's Visibility Solution offers comprehensive visibility that proves invaluable for network administrators and security teams. With the capability to capture and analyze traffic across all network layers, it guarantees that critical information and potential issues are never overlooked, regardless of where they emerge within the network. This complete visibility empowers organizations to proactively monitor service levels, adopting a proactive stance in swiftly identifying and resolving any network issues. This approach ensures uninterrupted service delivery and, simultaneously, satisfies the imperative need for network visibility in maintaining stringent security measures and regulatory compliance standards.

“Network tools like the Network Critical SmartNA-XL™ enables the State to maintain the QoS and QoE of our UC network.”

UC Platform Manager, Department of IT



Network Critical
The Window to your Network™



The deployment of the Network Critical SmartNA-XL™ offers five 1/10/40G slots to integrate a wide variety of Passive, Active, or Bypass TAP modules that safely connect tools while protecting network reliability and performance of the state's network services. It also has advanced features such as aggregation, filtering, load balancing, and port mapping to reduce planning, configuration, and tool management time. Network Critical's SmartNA-XL™ enabled the Department of Information Technology for the state of Maryland to manage the flow of information securely, efficiently, and reliably.

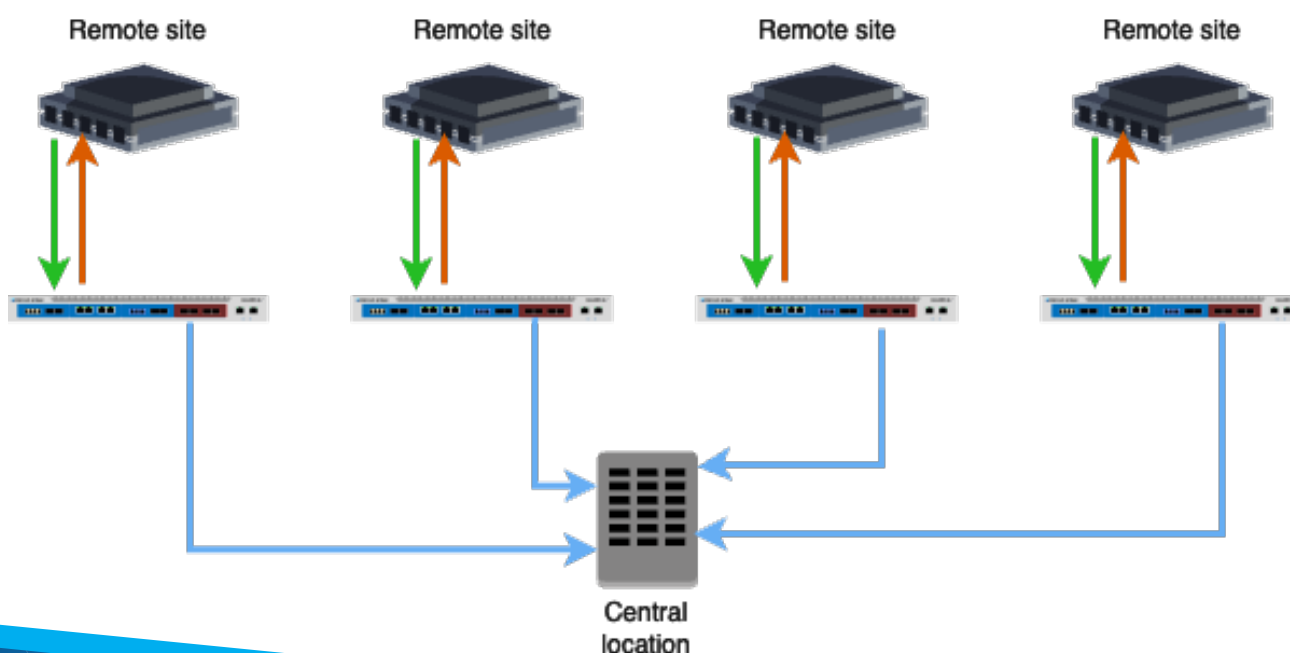
Solution Benefits

Network Critical's visibility solution was vital to the network infrastructure of the Department of Information Technology for the state of Maryland. Its quick and easy deployment across multiple interfaces was essential in a fast-paced digital environment where delays and complexity can impede operations and productivity. The solution's seamless integration into the network infrastructure highlights its efficiency and user-friendliness.

The ability to capture network traffic at all network layers is a critical capability. The ability to capture network traffic at all network layers is a critical capability, and the SmartNA-XL™ can intercept and monitor data traffic across the full range of communication protocols and data types and features support for custom protocols. This comprehensive visibility is invaluable for network administrators and security teams. It ensures that no critical information or potential issues go unnoticed, regardless of the network layer in which they occur.

Maintaining service levels is essential for any organization. Network downtime or performance degradation can have far-reaching consequences, including revenue loss, customer dissatisfaction, and decreased productivity. The Network Critical SmartNA-XL™, by providing complete visibility into network traffic, allows the organization to proactively monitor service levels. This proactive approach enables rapid identification and resolution of issues, ensuring uninterrupted service delivery.

Deployment example:





“We are also employing the SmartNA-XL™ in the roll-out and testing of new services.”

UC Platform Manager, State of Maryland Department of IT

Another crucial aspect is the solution's role in testing new services and innovations. In today's competitive landscape, organizations must continually adapt and introduce new services or features to stay relevant. The SmartNA-XL™'s traffic analysis capabilities are instrumental in evaluating the performance of new services and ensuring they meet quality standards. It allows for the thorough testing of innovations, minimizing the risk of deploying services that may negatively impact the network or customer experience.

Beyond service levels and innovation, network visibility is essential for security and compliance. Monitoring network traffic is a fundamental aspect of cybersecurity, as it enables the detection of suspicious activities, intrusion attempts, and potential security breaches. Compliance regulations often mandate comprehensive traffic monitoring and auditing, making the SmartNA-XL™ a valuable asset in meeting regulatory requirements.

About Network Critical

Network Critical is an industry leader in network access technology. Our quality 1/10/25/40/100G modular TAP and Packet Broker solutions ensure that our customers have continuous network visibility. Network Critical products eliminate any concerns of downtime and our unique scale-out capabilities enable simple, cost effective expansion, as network and port density requirements grow.

The health of your network is always secure with Network Critical products. Our fully flexible range of TAPs and Packet Brokers are used with IDS, IPS, network traffic monitoring tools, sniffers and many other mission critical appliances, to provide 100% network visibility with zero packet loss.

With over 20 years experience, a number of industry “firsts” and a reputation for excellent customer service, Network Critical's solutions are widely used in global networks across a wide range of sectors including Finance, Telco, Government, Energy and Healthcare.

For more information, visit
www.networkcritical.com



Network Critical

The Window to your Network™

www.networkcritical.com